

DECEMBER 2022

HOEDSPRUIT TAILINGS
 STORAGE FACILITY (TSF)

DETAILS OF TAILINGS STORAGE FACILITY

| | |
|--|--|
| Tailings Storage Facility (TSF) Name | Hoedspruit TSF |
| Operation | Rustenburg - Western Limb Tailings Retreatment Plant (WLTRP) |
| Operational Status | Active |
| Operating Segment | RSA - PGM |
| Location | Approximately 15 km east of the town of Rustenburg in the North-West Province - please refer to Figure 1 |
| Latitude, Longitude (decimals) | -25.6727, 27.4097 |
| Ore Source | Underground |
| Type of Storage Facility | Impoundment (upstream development) |
| Deposition Methodology | Hybrid paddock system |
| Year of Commissioning | 2004 |
| Consequence Classification (GISTM, 2020) | Very High |
| Operating Contractor | Fraser Alexander (Pty) Ltd (FAT) |
| Engineer of Record (EoR) | Knight Piesold (Pty) Ltd (KP) |
| Current Maximum Height (m) | 40 |
| Final Maximum Height (m) | 81 |
| Maximum Storage Capacity (tons/month) | 480 000 |
| Life of TSF (year) | 2044 @2.5m/yr |

TECHNICAL ASPECTS:

| | |
|--------------------------|--|
| Adopted Factor of Safety | Australian National Committee on Large Dams (ANCOLD) (July 2019) |
|--------------------------|--|



INNOVATION



COMMITMENT



ACCOUNTABILITY



RESPECT



ENABLING



SAFETY

Stability Assessment and Mitigation Measures (if applicable)

A stability assessment was conducted in 2021 and all the FoS were above the required limits.

This assessment will be updated based on piezocone probing and laboratory testing results once they become available in Q1 2023.
 (KP Reference: SAND301-00869/09 Rev A, December 2022)

Dam Breach Assessment

Assessment completed in 2022
 (KP Reference: PR301-00869//07 DHR0087 Rev 0, October 2022)

Area of Inundation

Has been identified by EoRs – please refer to Figures 2 and 3

Summary of Human Exposure

Consequence classification has been based on Population at Risk (PAR). Communities have been identified and are being engaged through various means including Community Engagement Forums (CEF)

DOCUMENTATION:

Site Specific OMS Manual

Version 2022 available

Dam Safety Review (DSR)

Carried out by an independent third party in 2020. All recommendations at the time have been addressed in the last 2 years.
 (KP Reference: RI301-00869/01 Rev B, May 2020)

Design Basis Report (DBR)

Version 2022 available
 (KP Reference: SAND301-00869/06 Rev B, 25 November 2022)

Environmental Management Programme (EMPr)

In place

Surveillance:

Surveillance Frequency

Daily by the Operator and monthly reports of critical controls submitted to and reviewed by the EoR

Surveillance Technology/System

K2Fly Decipher

Deformation Monitoring

Interferometric Synthetic Aperture Radar (InSAR)

Phreatic Surface Levels & Pore Pressure Measurements

Standpipe piezometers
 AquaSense Retrofit piezometers (IoT device)

RISK MANAGEMENT / EMERGENCY PREPAREDNESS:

Risk Assessment

Annual Risk Assessment (Bowtie and Fault Event Tree) completed with no untoward risk identified

Risk Management

Site specific OMS Manual in place
 Site specific Trigger Action Response Plans (TARPs) in place
 Critical controls established and implemented
 Operating contractor Technical and Operational Risk Assessment System (TORAS)

Site Specific Emergency Preparedness & Response Plans (EPRP)

Version 2022 available

Annual emergency mock drill for a catastrophic TSF failure – undertaken on 27 October 2022 with SSW employees and contractors.

CLOSURE & POST CLOSURE

Closure Planning

In place - report prepared by Golder Associates (Golder Reference: 20138269-341343-2, April 2021)

Closure Costing

Adequate financial capacity in place
 Financials prepared by Golder Associates (Golder Reference: 20138269_SS_RPM_CC_FINAL_incl. ARP_20210804)

Asset Insurance Cover

In place – July 2022 to June 2023

Independent Reviews:

Independent Tailings Review Board (ITRB)

13 July 2022 with no material concerns identified

Future ITRB Review

2025

Performance Reviews

Annual and quarterly reports and inspections completed by EoR (KP Reference: RI301-00869/06 Rev 0, 31 March 2022)



INNOVATION



COMMITMENT



ACCOUNTABILITY



RESPECT



ENABLING



SAFETY

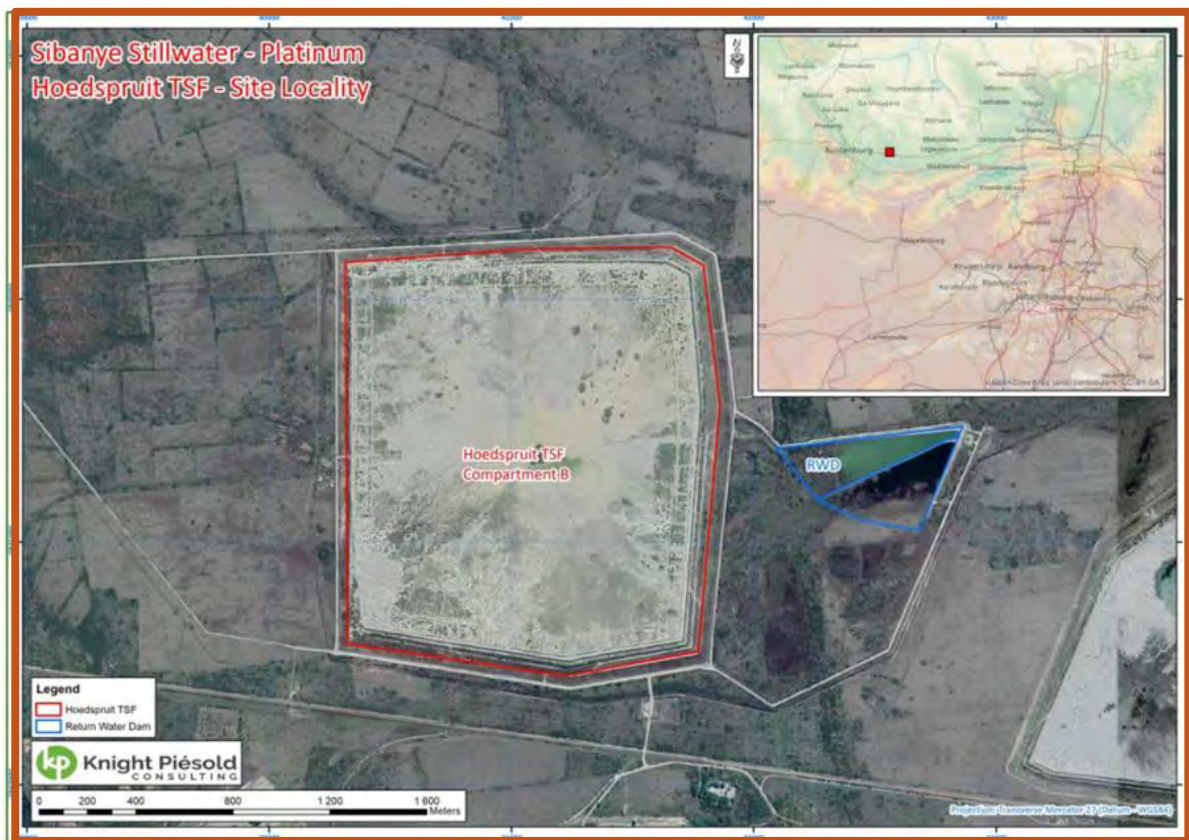


Figure 1: Layout of Hoedspruit Tailings Dam

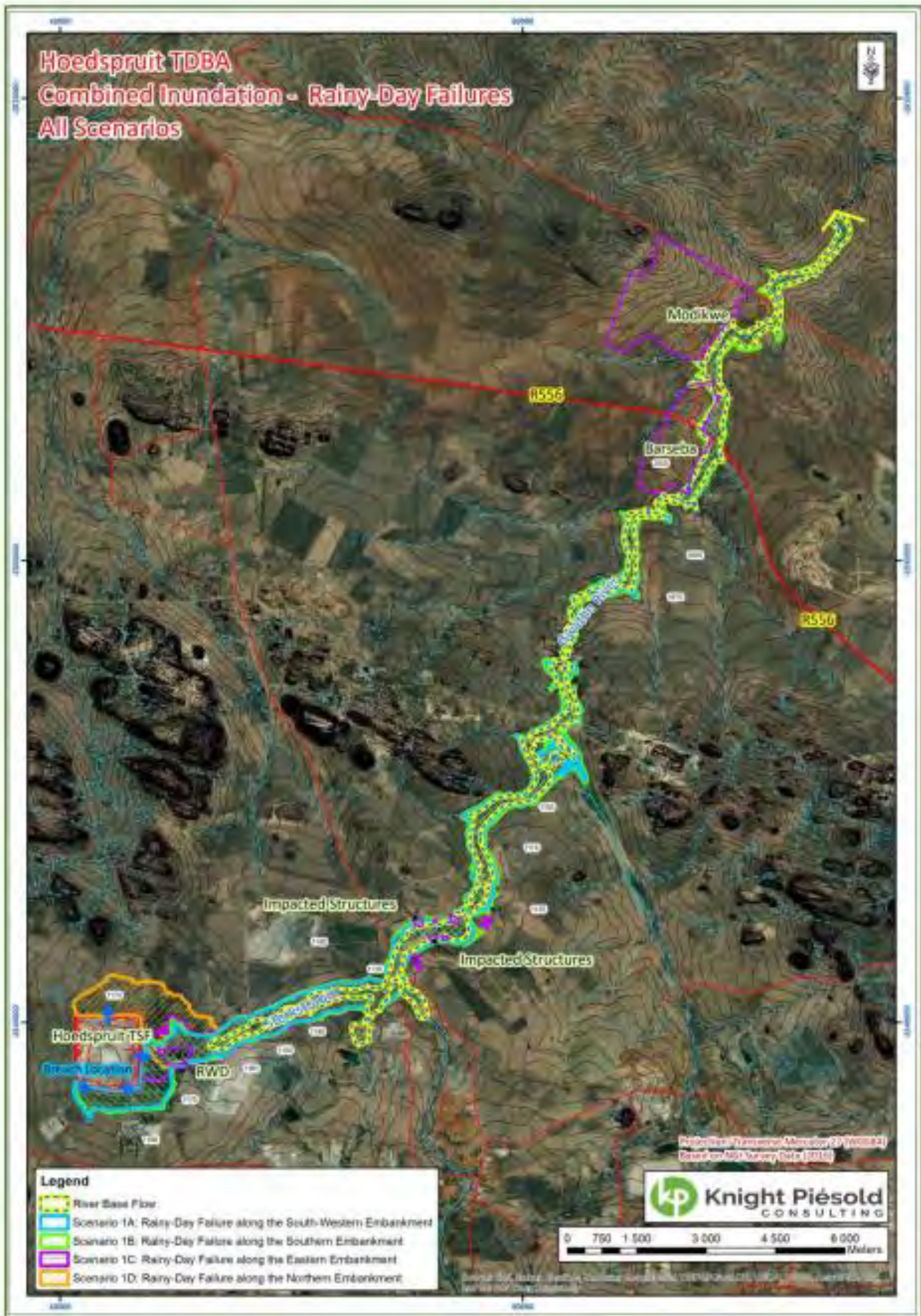


Figure 2: Consolidated view of the rainy-day failure scenario inundation boundaries



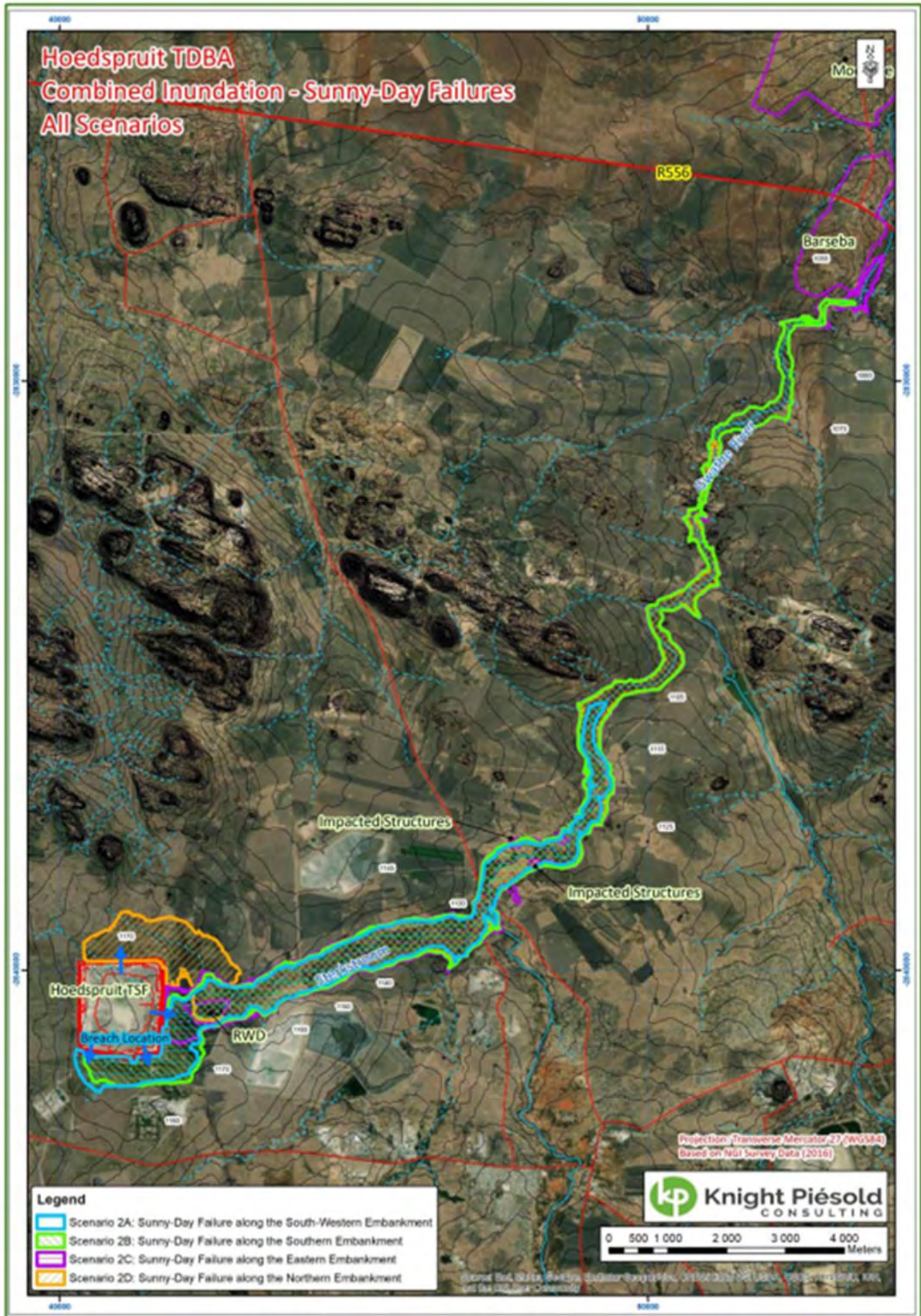


Figure 3: Consolidated view of the sunny-day failure scenario inundation boundaries



INNOVATION COMMITMENT ACCOUNTABILITY RESPECT ENABLING SAFETY