

**AUGUST 2023**

**WESTERN PLATINUM MINE  
 TAILINGS STORAGE  
 FACILITY (TSF) 7**

**DETAILS OF TAILINGS STORAGE FACILITY**

|  |   |
|--|---|
| <b>Tailings Storage Facility (TSF) Name</b>            | Western Platinum Tailings Dam Complex - Tailings Dam 7 (WPL TD7)                        |
| <b>Operation</b>                                       | Marikana  |
| <b>Operational Status</b>                              | Dormant since 2001  |
| <b>Operating Segment</b>                               | RSA - PGM   |
| <b>Location</b>  | 5 km east of the town of Marikana in the North-West province – please refer to Figure 1 |
| <b>Latitude, Longitude (decimals)</b>                  | -25.7020, 27.5409   |
| <b>Ore Source</b>                                      | Underground   |
| <b>Type of Storage Facility</b>                        | Impoundment (upstream development)  |
| <b>Deposition Methodology</b>                          | Spigot  |
| <b>Year of Commissioning</b>                           | 1992  |
| <b>Consequence Classification (GISTM, 2020)</b>        | TBC following the Dam Breach Assessment   |
| <b>Operating Contractor</b>                            | Fraser Alexander (Pty) Ltd (FAT)  |
| <b>Engineer of Record (EoR)</b>                        | SLR Consulting (Pty) Ltd  |
| <b>Current Maximum Height (m)</b>                      | 23  |
| <b>Final Maximum Height (m)</b>                        | 23  |
| <b>Total Volume Already Deposited (Mm<sup>3</sup>)</b> | 6.3   |
| <b>Life of TSF (year)</b>                              | N/A   |



INNOVATION



COMMITMENT



ACCOUNTABILITY



RESPECT



ENABLING



SAFETY

## TECHNICAL ASPECTS:

### Design Criteria

GISTM and best practice guidelines including Australian National Committee on Large Dams (ANCOLD) (Guidelines on Tailings Dams, July 2019). Site specific design criteria were specified by the EoR. Details will be included in the Design Basis Report (DBR) that is currently being prepared.

### Stability Assessment and Mitigation Measures

A detailed stability assessment based on laboratory test work was conducted in 2023 (SLR Ref No.: 720.19129.00035 Rev 0, August 2023).

All the FoS are above the recommended limits and thus no mitigation measures were required.

Piezocone probing to be undertaken in H2 2023 to confirm phreatic surface and foundation material

### Dam Breach Assessment

Assessment completed in 2023 (SLR Ref No: 723.026021.00001 Rev 1, July 2023)

### Zone of Influence

Has been identified by EoRs – please refer to Figure 2

### Summary of Human Exposure

Consequence classification has been based on Population at Risk (PAR). Communities have been identified and are being engaged through various means including Community Engagement Forums (CEF)

## DOCUMENTATION:

### Site Specific OMS Manual

Version 2023 available

Mandatory Code of Practice (MCOP) Document No: SS-ZA-PGM's-MCOP-CON-TLS-0101 is in place (dated September 2022)

### Design Basis Report (DBR)

Version 2023 available (SLR Project No: 720.19129.00035 Rev 1, July 2023)



INNOVATION



COMMITMENT



ACCOUNTABILITY



RESPECT



ENABLING



SAFETY



**Environmental Management System**

The Environmental Management System is ISO accredited (ISO 14001:2015)

The initial Environmental Management Programme (EMPr) is dated 2004. Numerous addendums have been submitted with the latest being in 2013.

**Surveillance:**

**Surveillance Frequency**

Daily by the Operator and quarterly reports of critical controls submitted to and reviewed by the EoR

**Surveillance Technology/System**

K2Fly Decipher

**Deformation Monitoring**

Interferometric Synthetic Aperture Radar (InSAR)

**Phreatic Surface Levels & Pore Pressure Measurements**

Standpipe piezometers

**RISK MANAGEMENT / EMERGENCY PREPAREDNESS:**

**Risk Assessment**

Annual Risk Assessment (Bowtie) completed with no untoward risk identified

**Risk Management**

Site specific OMS Manual in place  
 Site specific Trigger Action Response Plans (TARPs) in place  
 Critical controls established and implemented  
 Operating contractor Technical and Operational Risk Assessment System (TORAS)

**Site Specific Emergency Preparedness & Response Plans (EPRP)**

Version 2023 available

Annual emergency mock drill for a catastrophic TSF failure – undertaken on 9 June 2023 with SSW employees and contractors.

Environmental emergency preparedness is managed on site according to ISO14001: 2015.



INNOVATION



COMMITMENT



ACCOUNTABILITY



RESPECT



ENABLING



SAFETY

## CLOSURE & POST CLOSURE

### Closure Planning

In place - report prepared by Golder Associates  
 (Golder Reference: 20141966-340280-9, June 2021)

### Closure Costing

Adequate financial capacity in place  
 Financials prepared by Golder Associates  
 (Golder Reference: 21467970-349390-1, December 2021)

### Asset Insurance Cover

In place – July 2022 to June 2023 (currently undergoing renewal)

## Independent Reviews:

### Independent Tailings Review Board (ITRB)

27 June 2023 with no material findings

### Future ITRB Review

2026

### Performance Reviews

Annual and quarterly reports with inspections completed by EoR  
 (SLR Project No: 720.19129.00035 Rev 0, July 2023)

### Dam Safety Review (DSR)

Carried out by an independent third party in 2020. All recommendations at the time have been addressed in the last 2 years.  
 (KP Reference: R1301-00877/02 Rev B, 26 August 2020)

Next review scheduled for 2026



INNOVATION



COMMITMENT



ACCOUNTABILITY



RESPECT



ENABLING



SAFETY



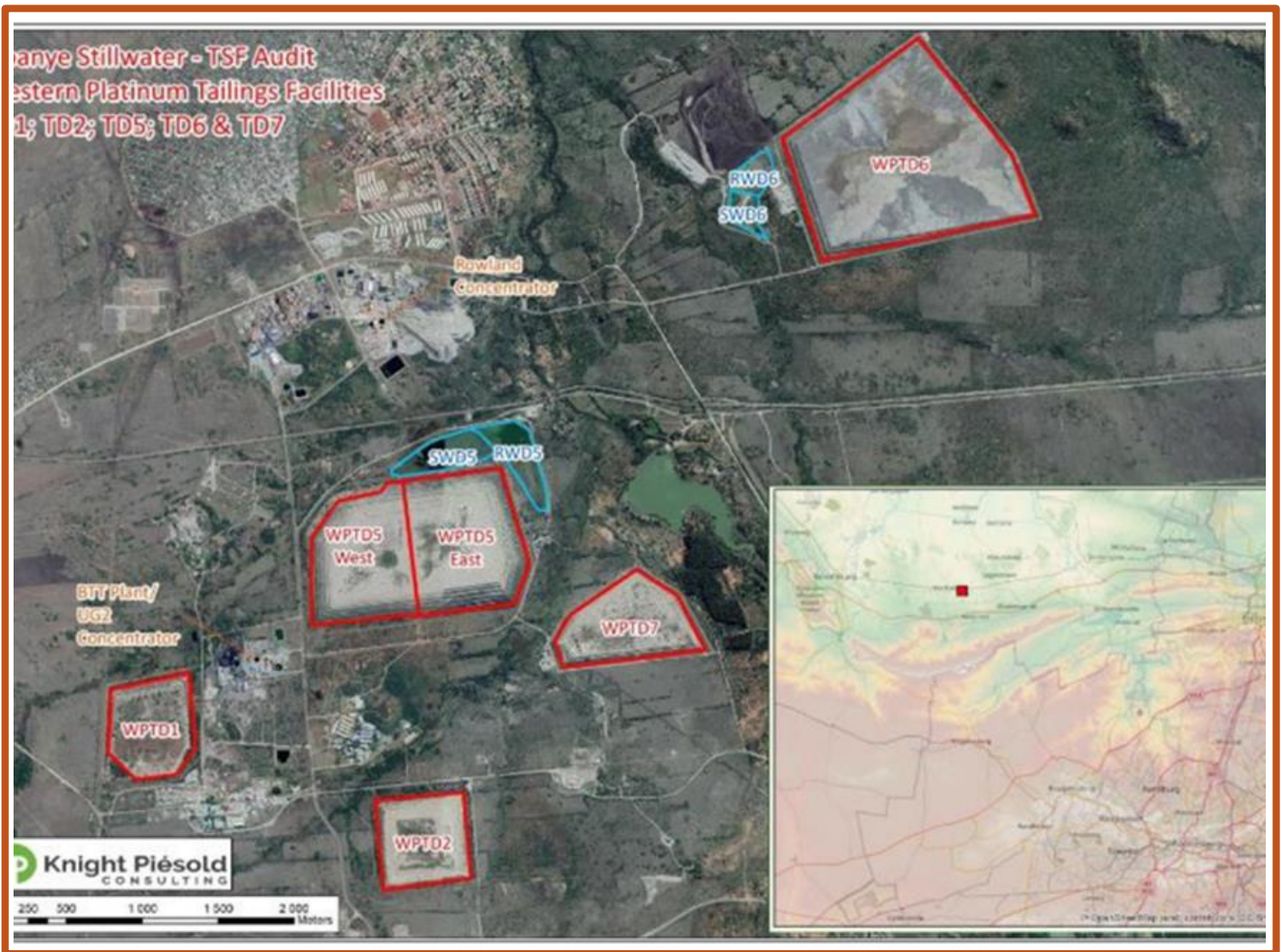


Figure 1: Layout of Western Platinum (WPL) Tailings Dam Complex



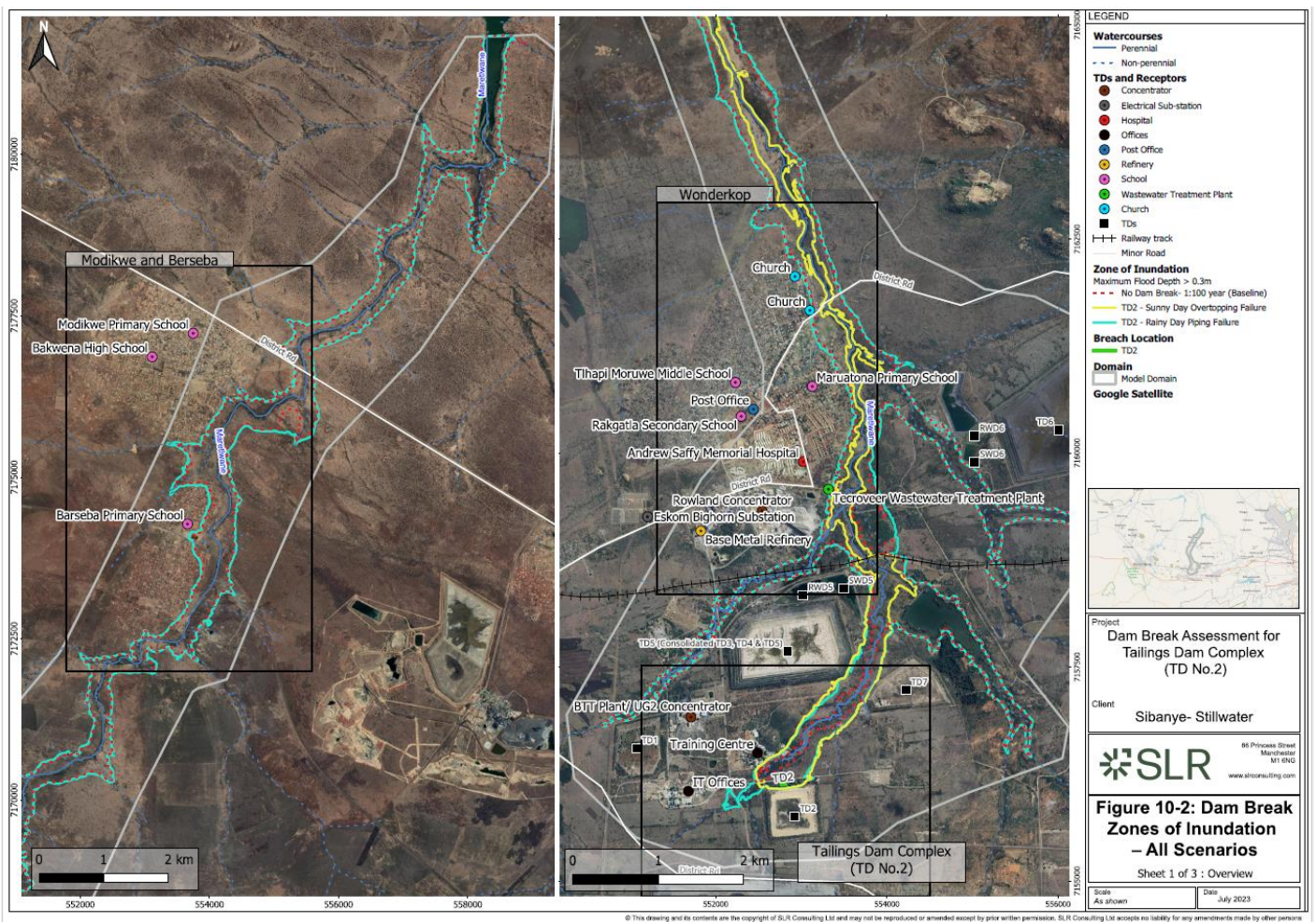


Figure 2: Area of Inundation (All Scenarios)